

TALANOA - GENDERED IMPACTS OF SOCIAL MEDIA

E-SAFETY COMMISSIONER AUSTRALIA

KIRA OSBORNE



ONLINE VIOLENCE AGAINST WOMEN is a GLOBAL CHALLENGE

85% OVERALL PREVALENCE

WOMEN are DISPROPORTIONALLY TARGETED



WE NEED a MULTISECTORAL RESPONSE & REGIONAL APPROACH

TECHNOLOGY FACILITATED ABUSE (TFA)



4 in 5 WOMEN



UNDER-REPORTED for MANY REASONS, inc. FEAR & SHAME



COMMUNICATION LOOP w- WOMEN to ↑ AWARENESS & RECEIVE INFO ON HOW THEY'RE EXPERIENCING TFA

ROBUST & UP-to-DATE DATA. LISTEN to their STORIES!

PREVENTION

AWARENESS & EDUCATION

PROACTIVE and SYSTEMIC CHANGE



BASIC ONLINE SAFETY EXPECTATIONS and CODES



SAFETY by DESIGN

PROTECTION ONLINE SAFETY ACT COMPLIANCE & ENFORCEMENT ACT I O N S

PRO-TERRORIST CONTENT

ILLEGAL CONTENT

CHILD SEXUAL EXPLOITATION

IMAGE-BASED ABUSE

ADULT CYBER ABUSE

CYBER BULLYING

TALANOA - GENDERED IMPACTS of SOCIAL MEDIA

FIJI ONLINE SAFETY COMMISSION

TAJESHWARI DEVI

FACTORS to CONSIDER to ASSESS HARM

- EXTREMITY of LANGUAGE/ IMAGES/ VIDEOS
- AGE & CHARACTERISTICS
- ANONYMITY
- REPETITION
- TRUE / FALSE
- CONTEXT



STAKEHOLDER ENGAGEMENT & RELATIONSHIPS are everything

INVESTIGATIONS

✓ SEEK to RESOLVE

↓
SERVE a NOTICE

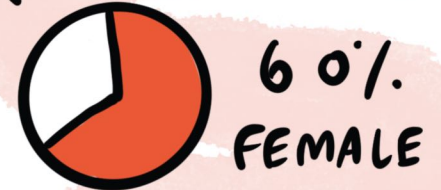
↓
ADVISE the PERSON MAKING the COMPLAINT

PARTNERS

e SAFETY COMMISSIONER AUSTRALIA RESOURCES + NETWORKS

FIJI POLICE FORCE INVESTIGATING, TRAINING and AWARENESS

REPORTS



f 36% FACEBOOK
t 6% TIK TOK

x x GENDER-SPECIFIC HARASSMENT

UNDER-REPORTING for MINORS as THEY REQUIRE an ADULT to REPORT

TALANOA - GENDERED IMPACTS OF SOCIAL MEDIA

FIJI POLICE FORCE

CORPORAL SAVENACA SIWATIBAU



DIGITAL LITERACY & ONLINE SAFETY



MoUs with OUR PARTNERS to be CLEAR ON ROLES

WE WORK TOGETHER as a FAMILY



collaborate WITH ISPs, MEDIA, PODCASTS, SCHOOLS

TAKE EVERY OPPORTUNITY! **EMPOWER OUR COMMUNITIES!**



FIJI is NOW 95% CONNECTED ... So WE HAVE a DUTY to KEEP PEOPLE SAFE.

RECOGNISE and MAXIMISE your STRENGTHS



COMMUNITY ENGAGEMENT & AWARENESS



POLICE TRAINING



UPGRADE FORENSIC TECHNOLOGY

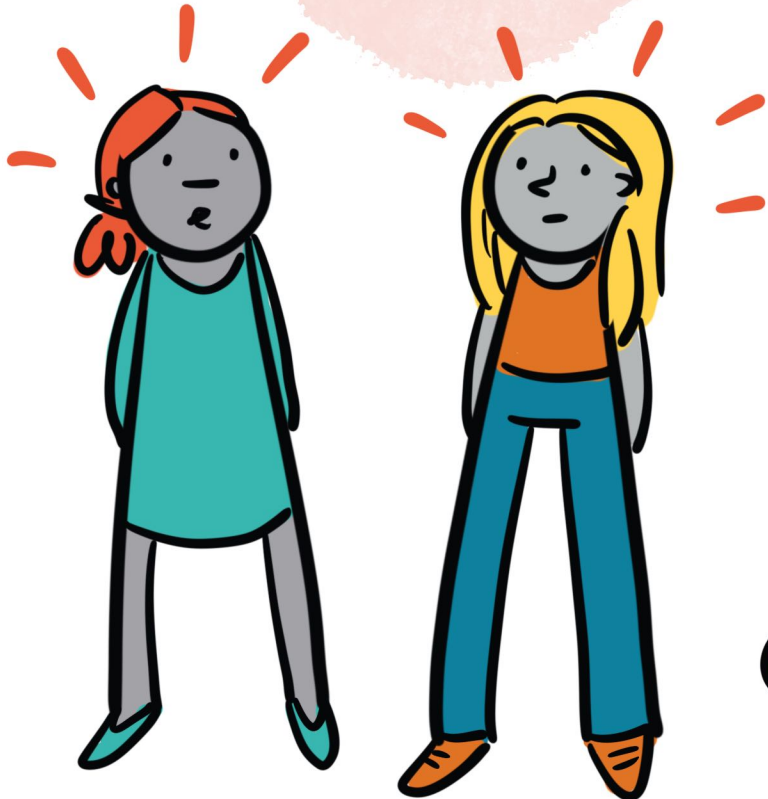


CAPACITY BUILDING

VISIT THEM & GIVE them OWNERSHIP

TALANOA - GENDERED IMPACTS OF SOCIAL MEDIA

WOMEN & GIRLS FACE
SPECIFIC THREATS
ONLINE...

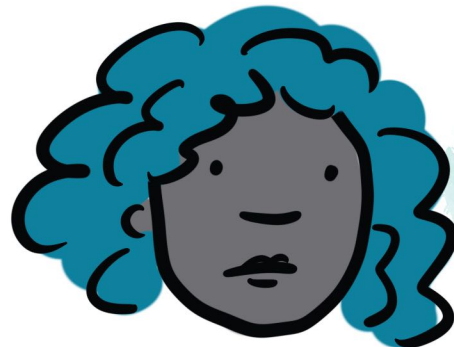


but THERE is a REDUCED
NUMBER of REPORTS

→ AWARENESS & EDUCATION

→ CONSTANT EXPOSURE

→ REPRESENTATION in
CRIMINAL JUSTICE SYSTEM.
= FEELING COMFORTABLE
to REPORT.



A VICTIM-CENTRIC
APPROACH

RIGHTS

SPECIFIC
TRAINING



TALANOA - GENDERED IMPACTS OF SOCIAL MEDIA



ONLINE SAFETY



CYBER SECURITY



EVIDENCE & RESEARCH

REGIONAL ORGS WILL NEED TO TAKE THIS ON IN THE PACIFIC, SO OUR RESOURCES & RESPONSE CAN BE FIT FOR PURPOSE



TRANSLATE RESOURCES TO LOCAL LANGUAGES



FIRST LINE OF DEFENCE FOR

KNOWING WHAT TO DO & HOW TO ACT ONLINE, e.g.

- DIGITAL LITERACY
- PASSWORDS
- MENTALITY SHIFT
(AWAY FROM "I DON'T CARE, IT DOESN'T AFFECT ME")



THE THRESHOLD / DEFINITIONS WILL BE CONTEXTUAL
SEEK FEEDBACK FROM COMMUNITIES TO ADDRESS THEIR ISSUES.

WE'RE THERE TO SERVE THEM.

THERE ARE MECHANISMS & PACIFIC TEAMS. APPROACH AS A REGION. LEVERAGE LEGISLATION TO SET EXPECTATIONS.



RELATIONSHIPS W- SOCIAL MEDIA

BE PERSISTENT. LEVERAGE YOUR PACIFIC HOSPITALITY... THE HUMAN FACTOR.
USE YOUR STRENGTHS.

PACIFIC PERSPECTIVES ON LAW REFORM

JOSEPHINE ADVENT PITMUR (PNG)

IMAGE BASED ABUSE OF SORCERY ACCUSATION RELATED VIOLENCE (SARV)

WHAT IS SORCERY or WITCHCRAFT?

BELIEF & PRACTICES that ONE HUMAN CAN HARM ANOTHER BY MAGICAL/SUPERNATURAL MEANS

(OFTEN AROUND ILLNESS or DEATH)

IMPLICATIONS for HARM CAN be VERY SERIOUS, inc. TORTURE for CONFESSION

OUR MESSAGE - THE RULE of LAW PREVAILS. YOU CAN HAVE your BELIEFS but NOT at the EXPENSE of a LIFE.

WHAT WILL STOP SARV?

- ✓ PREPAREDNESS of INDIVIDUALS
- 🔗 COOPERATION X-SOCIETY
- 🚩 COMMUNITY LEADERSHIP
- ♥ COMPASSION



SARV IMPACTS EVERYONE ... but the KIND of VIOLENCE on MEN/WOMEN is DIFFERENT

IMPACT DIFFERS REGIONALLY



WOMEN are MORE LIKELY to FACE VIOLENCE or be DISPLACED

ACTION AREAS

- ➔ SERVICES
- ➔ ADVOCACY & COMM's
- ➔ LEGAL + PROTECTION
- ➔ RESEARCH



*TARGETED TRAINING on STATEMENT WRITING



SHARING IMAGES without CONSENT on SOCIAL MEDIA or IN COMMUNITIES

SARV IMPACTS the WHOLE FAMILY

CHILDREN are MOST AFFECTED

IT ERODES TRUST.

SARV is COMPLEX

- ➔ CULTURE + WORLDVIEW e.g. REVENGE CULTURE, POLYGAMY/JEALOUSY...
- ➔ LOCAL NARRATIVE
- ➔ RELIGION
- ➔ LOCAL CONTEXT
- ➔ RULE of LAW



PACIFIC PERSPECTIVES on LAW REFORM

ANDREW KELESI (SOLOMON ISLANDS)

SOLOMON ISLANDS

OUR CURRENT POSITION

2 LEGISLATIONS that DEAL with DIGITAL EVIDENCE:

- 1) EVIDENCE ACT 2009
- 2) POLICE ACT 2013

- * SAFEGUARDS are INADEQUATE
- * LAW REVIEW is IMPERATIVE

WE are RUNNING BEHIND, but LOOK FORWARD to LEARNING from OTHERS

COMMON ISSUES

BULLYING & HARRASSMENT that CAN LEAD to HARM

SHARING POLITICAL/DISRESPECTFUL COMMENTARY

* CURRENT LAWS ONLY RELATE to IMAGES



COLLECTION & ADMISSION of ELECTRONIC EVIDENCE



NEEDS to be INCLUDED in LEGISLATION



STRATEGIES for SUPPORTING VICTIMS of CYBERCRIME



MORAL SUPPORT
THROUGHOUT the
PROCESSES for a
SURVIVOR WITNESS
PREVENT RELIVING
T R A U M A

YOU ARE
PART of
the JUSTICE
SYSTEM

WITH THEM on the WHOLE
JOURNEY, through ALL
SERVICES & POST-PROSECUTION
IT IS A LONG PROCESS



NEVER FORGET the
HUMAN ASPECT

ENGAGE our
COMMUNITIES
to UNDERSTAND

MAKE the
NECESSARY
REFERRALS
WHEN you DON'T
HAVE the SKILLS

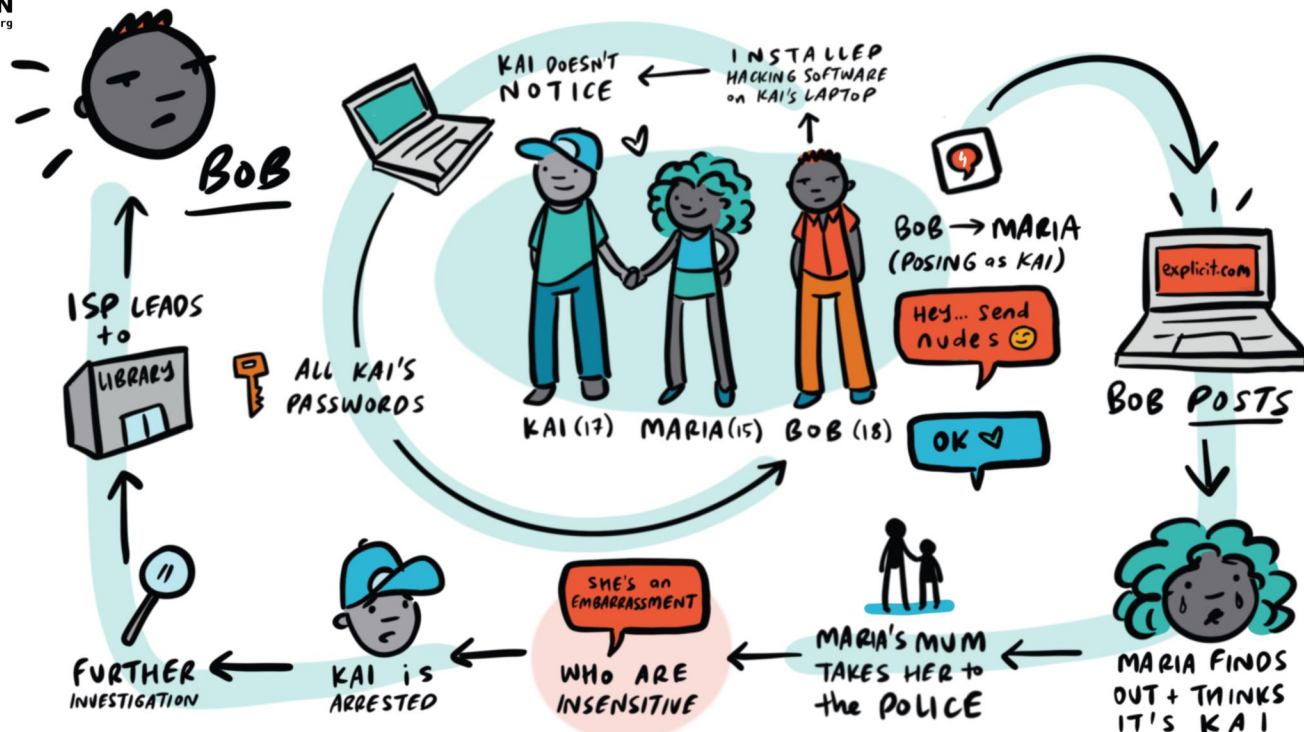


WE MUST BUILD CAPACITY the WHOLE WAY through: FROM FRONTLINE
to PROSECUTION

ALL STAKEHOLDERS MUST TREAT VULNERABLE
WITNESSES with EMPATHY, DIGNITY & RESPECT



STRATEGIES for SUPPORTING VICTIMS of CYBERCRIME CASE STUDY



PROCEDURE IMPROVEMENTS

- ACKNOWLEDGE PSYCHOLOGICAL ASPECTS & WELLBEING of SURVIVOR
- TRAUMA-INFORMED, SAFE SPACE. OFFER FEMALE OFFICER.
- ASK their PREFERENCE & ENSURE COMFORT
- EMPOWER SURVIVOR to TELL HER STORY.
- SURVIVOR SUPPORT ROLE (OUTSIDE of FAMILY?)
- TALK to MUM SEPARATELY
- BUILD TRUST & RAPPORT
- DO NOT RUSH
- BALANCE with ENSURING RIGHT Q'S are ASKED & NO ASSUMPTIONS
- TAKE BREAKS as REQUIRED
- OUT of UNIFORM?
- PROVIDE ADVICE for NEXT STEPS and CHECK IN with VICTIM

IMPROVES QUALITY of the STATEMENT, WHICH AFFECTS PROSECUTION.

WE MUST RECOGNISE the CULTURAL & RELIGIOUS CONTEXT WE are in, and the GENDERED IMPLICATIONS

SAFETY of the SURVIVOR is PRIORITY → CONNECT to SERVICES

APPROACH from the HUMAN ASPECT



NOT TREATING the SURVIVOR RESPECTFULLY, LEADS them to FEEL... EMBARRASSED, HUMILIATED, ASHAMED TRAUMATISED, VIOLATED, UNSUPPORTED ... WHICH DOESN'T LEAD to an OPEN & FRANK STATEMENT

STRATEGIES FOR SUPPORTING VICTIMS OF CYBERCRIME CASE STUDY

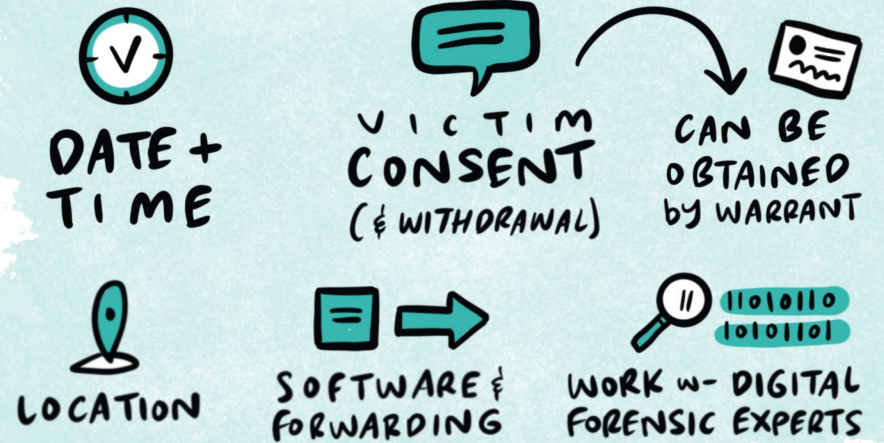


THE FLOW-ON IMPACTS
IN HER SCHOOL AND
COMMUNITY ARE
SEVERELY AFFECTING
MARIA'S MENTAL HEALTH

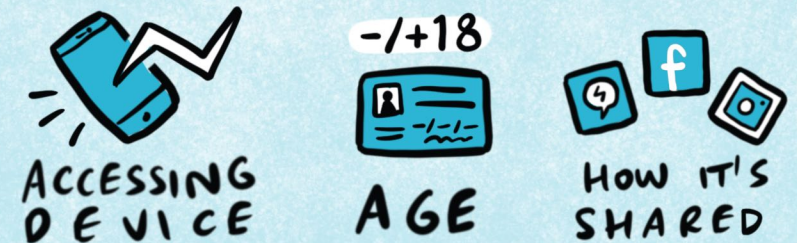
MARIA & HER FAMILY
DECIDE NOT TO PROCEED.

THE POLICE HAVE
CHARGED BOB &
FINDING IT HARD TO
CONTACT MARIA

DIGITAL EVIDENCE CONSIDERATIONS



IDENTIFY OFFENCES CONSIDERATIONS



STRATEGIES FOR SUPPORTING VICTIMS OF CYBERCRIME CASE STUDY



PREPARING the SURVIVOR / VULNERABLE WITNESS for TESTIMONY is KEY

- MAKE them COMFORTABLE
- SAFE ENVIRONMENT
- KEEP in CONTACT

SPECIAL MEASURES for TRIAL



USE of SCREEN



SUPPORT PERSON



INTERMEDIARY



RESTRICTIONS on EVIDENCE (eg REPUTATION)



CLOSED COURT



SAFE HOUSES



PRE RECORD



REMOTE LOCATION



SEATING ARRANGEMENTS



OUTSIDE COURTROOM



DE-ROBING JUDGE/LAWYERS



NAME SUPPRESSION